
Appendix G:

Corridor X

Jacksonville to Greenville

U.S. 13/U.S. 264/N.C. 11/C.F. Harvey Pkwy/U.S. 258

Population and Employment Growth
Statewide Model





Table of Contents

Tables

Table G-1. Population and Employment Growth – Statewide Model Traffic Analysis Zone.....3

Figures

Figure 5. Population Growth – Statewide Model Traffic Analysis Zone Map5

Figure 6. Employment Growth – Statewide Model Traffic Analysis Zone Map6



Population and Employment Growth

This appendix presents base and future year population and employment growth for Corridor X of the North Carolina Strategic Transportation Corridors (STC). The following data is collected using the Traffic Analysis Zones (TAZ) of the North Carolina Statewide Model and is organized numerically by TAZ Number. TAZ within a 2-mile buffer area on both sides of the corridor were used to capture population and employment totals.



Table G-1. Population and Employment Growth – Statewide Model Traffic Analysis Zone

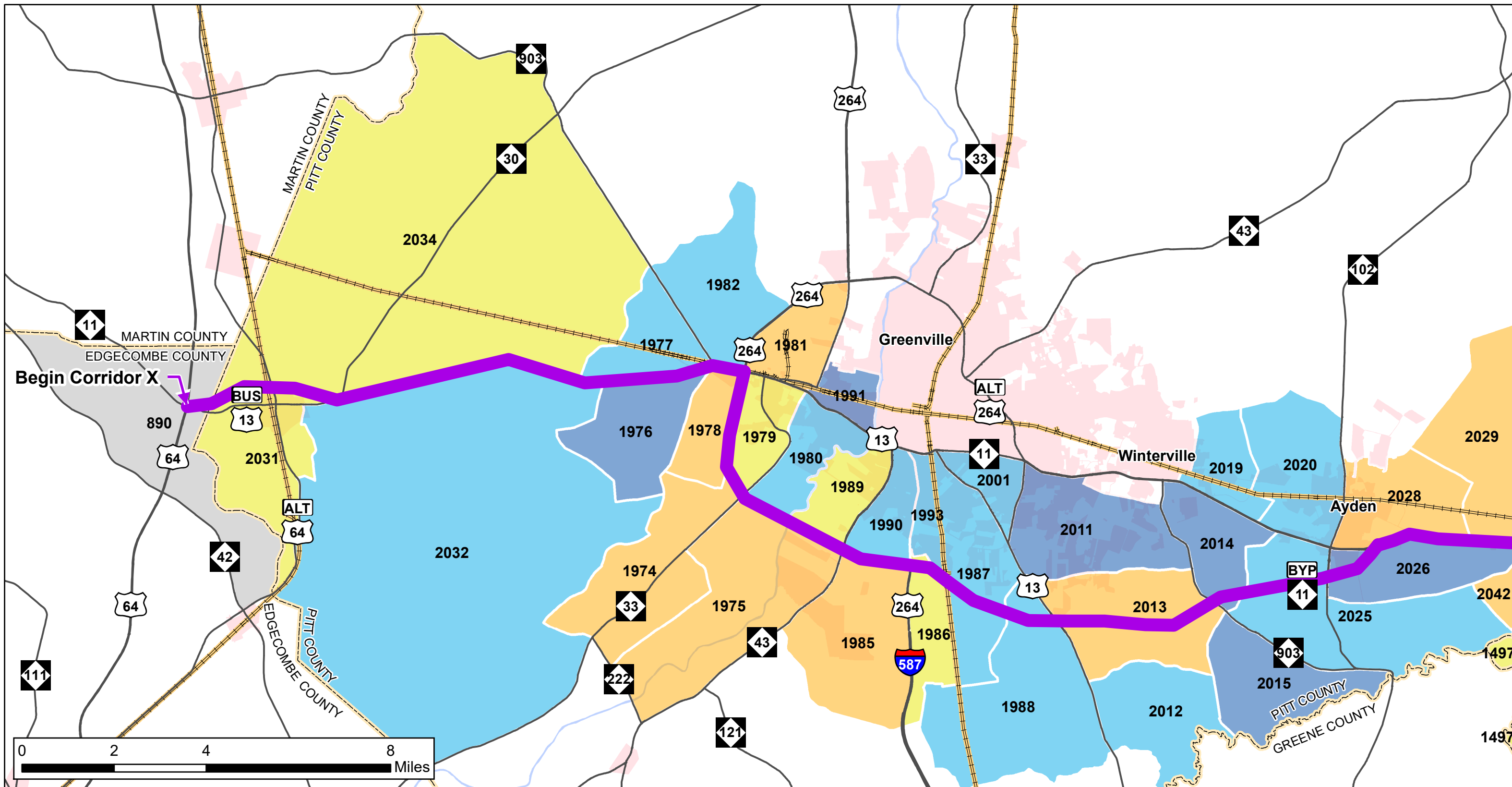
| TAZ Number | Population in 2015 | Population in 2040 | Annual Population Growth (2015-2040) | Total Number of Employed Persons in 2015 | Total Number of Employed Persons in 2040 | Annual Employment Growth (2015-2040) |
|------------|--------------------|--------------------|--------------------------------------|--|--|--------------------------------------|
| 890 | 114 | 112 | -0.1% | 0 | 0 | 0.0% |
| 1481 | 1,522 | 1,503 | -0.1% | 258 | 288 | 0.4% |
| 1482 | 2,729 | 2,711 | <0.0% | 1,075 | 1,200 | 0.4% |
| 1497 | 3,351 | 3,356 | <0.1% | 453 | 481 | 0.2% |
| 1498 | 11,546 | 11,482 | <0.0% | 4,679 | 4,963 | 0.2% |
| 1499 | 2,575 | 2,561 | <0.0% | 1,941 | 2,059 | 0.2% |
| 1500 | 11,085 | 11,000 | <0.0% | 10,410 | 11,041 | 0.2% |
| 1501 | 3,134 | 3,142 | <0.1% | 1,943 | 2,061 | 0.2% |
| 1502 | 2,547 | 2,549 | <0.1% | 1,956 | 2,075 | 0.2% |
| 1503 | 10,526 | 10,418 | <0.0% | 6,110 | 6,480 | 0.2% |
| 1505 | 2,789 | 2,755 | <0.0% | 1,813 | 1,924 | 0.2% |
| 1506 | 1,134 | 1,119 | -0.1% | 157 | 167 | 0.2% |
| 1507 | 2,493 | 2,460 | -0.1% | 1,600 | 1,697 | 0.2% |
| 1508 | 3,237 | 3,233 | <0.0% | 951 | 1,009 | 0.2% |
| 1875 | 5,585 | 9,323 | 2.1% | 1,266 | 1,380 | 0.3% |
| 1877 | 4,544 | 6,117 | 1.2% | 288 | 307 | 0.3% |
| 1878 | 14,637 | 23,399 | 1.9% | 966 | 1,144 | 0.7% |
| 1881 | 9,561 | 12,898 | 1.2% | 977 | 1,026 | 0.2% |
| 1882 | 2,964 | 3,996 | 1.2% | 892 | 1,064 | 0.7% |
| 1883 | 5,596 | 6,680 | 0.7% | 4,945 | 5,164 | 0.2% |
| 1885 | 11,110 | 13,996 | 0.9% | 4,437 | 4,800 | 0.3% |
| 1886 | 1,311 | 1,413 | 0.3% | 6,934 | 7,542 | 0.3% |
| 1889 | 1,643 | 2,217 | 1.2% | 150 | 163 | 0.3% |
| 1891 | 1,435 | 1,935 | 1.2% | 33 | 64 | 2.7% |
| 1892 | 1,389 | 1,872 | 1.2% | 2,328 | 2,532 | 0.3% |
| 1893 | 4,006 | 5,239 | 1.1% | 935 | 987 | 0.2% |
| 1894 | 3,767 | 4,435 | 0.7% | 2,875 | 3,127 | 0.3% |
| 1895 | 7,264 | 10,140 | 1.3% | 1,474 | 1,603 | 0.3% |
| 1896 | 20,350 | 26,386 | 1.0% | 6,687 | 7,360 | 0.4% |
| 1974 | 2,536 | 3,488 | 1.3% | 307 | 563 | 2.5% |
| 1975 | 2,607 | 3,631 | 1.3% | 244 | 254 | 0.2% |
| 1976 | 671 | 1,277 | 2.6% | 26 | 28 | 0.3% |
| 1977 | 279 | 405 | 1.5% | 104 | 332 | 4.8% |
| 1978 | 748 | 974 | 1.1% | 200 | 209 | 0.2% |

(Continued on next page)



Table F-2. Population and Employment Growth – Statewide Model Traffic Analysis Zone (Continued)

| TAZ Number | Population in 2015 | Population in 2040 | Annual Population Growth (2015-2040) | Total Number of Employed Persons in 2015 | Total Number of Employed Persons in 2040 | Annual Employment Growth (2015-2040) |
|------------|--------------------|--------------------|--------------------------------------|--|--|--------------------------------------|
| 1979 | 1,888 | 2,100 | 0.4% | 367 | 381 | 0.1% |
| 1980 | 1,221 | 1,751 | 1.5% | 537 | 559 | 0.2% |
| 1981 | 1,264 | 1,626 | 1.0% | 4,836 | 6,383 | 1.1% |
| 1982 | 399 | 570 | 1.4% | 5,477 | 7,039 | 1.0% |
| 1985 | 772 | 1,001 | 1.0% | 307 | 321 | 0.2% |
| 1986 | 1,540 | 1,731 | 0.5% | 117 | 123 | 0.2% |
| 1987 | 3,069 | 4,808 | 1.8% | 923 | 1,265 | 1.3% |
| 1988 | 1,673 | 2,767 | 2.0% | 210 | 220 | 0.2% |
| 1989 | 2,709 | 2,944 | 0.3% | 1,403 | 1,818 | 1.0% |
| 1990 | 3,616 | 5,558 | 1.7% | 14,378 | 18,408 | 1.0% |
| 1991 | 577 | 1,031 | 2.3% | 701 | 731 | 0.2% |
| 1993 | 2,525 | 3,621 | 1.5% | 3,062 | 4,052 | 1.1% |
| 2001 | 5,566 | 7,883 | 1.4% | 1,436 | 2,076 | 1.5% |
| 2011 | 9,922 | 18,940 | 2.6% | 3,194 | 4,755 | 1.6% |
| 2012 | 427 | 661 | 1.8% | 110 | 115 | 0.2% |
| 2013 | 1,638 | 2,215 | 1.2% | 157 | 165 | 0.2% |
| 2014 | 762 | 1,484 | 2.7% | 62 | 282 | 6.2% |
| 2015 | 413 | 689 | 2.1% | 79 | 84 | 0.2% |
| 2019 | 1,095 | 1,532 | 1.4% | 576 | 864 | 1.6% |
| 2020 | 2,800 | 4,195 | 1.6% | 945 | 986 | 0.2% |
| 2025 | 1,216 | 1,716 | 1.4% | 360 | 1,069 | 4.4% |
| 2026 | 694 | 1,355 | 2.7% | 702 | 1,477 | 3.0% |
| 2028 | 2,721 | 3,540 | 1.1% | 765 | 1,284 | 2.1% |
| 2029 | 1,031 | 1,289 | 0.9% | 573 | 598 | 0.2% |
| 2031 | 1,754 | 1,795 | 0.1% | 488 | 2,707 | 7.1% |
| 2032 | 1,868 | 2,969 | 1.9% | 463 | 2,568 | 7.1% |
| 2034 | 1,250 | 1,384 | 0.4% | 609 | 3,380 | 7.1% |
| 2042 | 159 | 216 | 1.2% | 18 | 104 | 7.3% |
| 2043 | 4,242 | 6,215 | 1.5% | 1,094 | 6,064 | 7.1% |



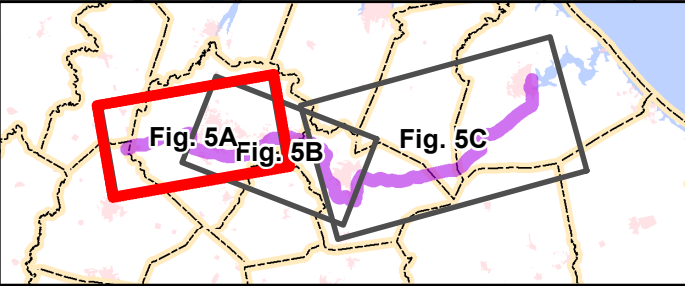
NC STRATEGIC TRANSPORTATION CORRIDOR X (STC)
 FEBRUARY 2022
 Source: NCOneMap, NCDOT GIS, ESRI

Legend

- STC Highway Corridor X
- Interstate
- U.S./N.C. Route
- Rail
- Major Water Bodies
- Municipal Boundary
- Counties

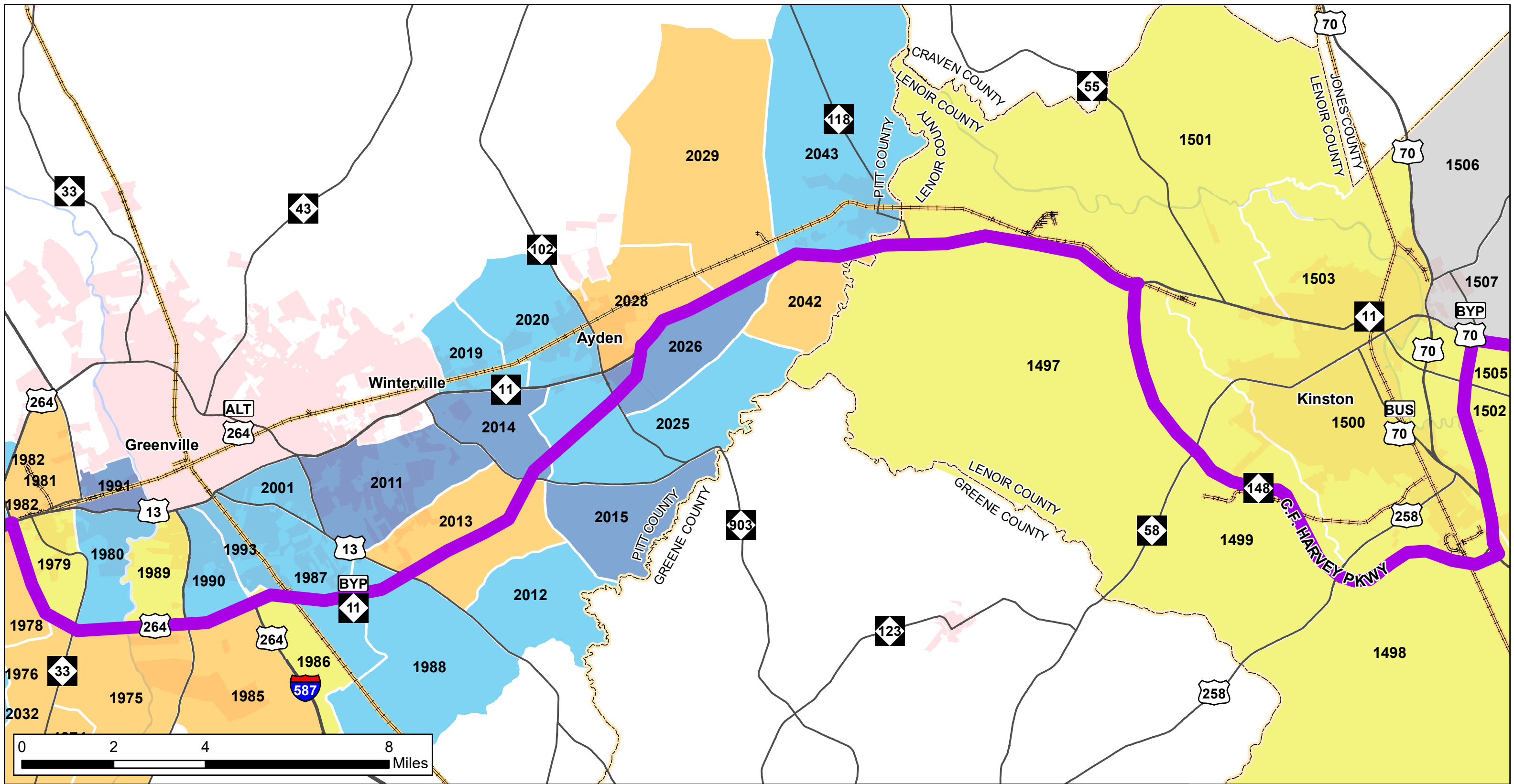
Annual Population Growth (2015-2040)

| | |
|---|-------------|
| ■ | <0% |
| ■ | 0.0% - 0.6% |
| ■ | 0.6% - 1.3% |
| ■ | 1.3% - 2.0% |
| ■ | 2.0% - 2.7% |



CORRIDOR X: POPULATION GROWTH - STATEWIDE MODEL TRAFFIC ANALYSIS ZONES (TAZ)
FIGURE 5A: U.S. 13 TO GREENVILLE

TAZ Number on the map correlates to TAZ Number in Appendix F of the Mobility Analysis Report. Additional population and employment data can be found in the data tables.
 *TAZ Number is the 1-4 digit solid, bold number in map.



NC STRATEGIC TRANSPORTATION CORRIDOR X (STC)

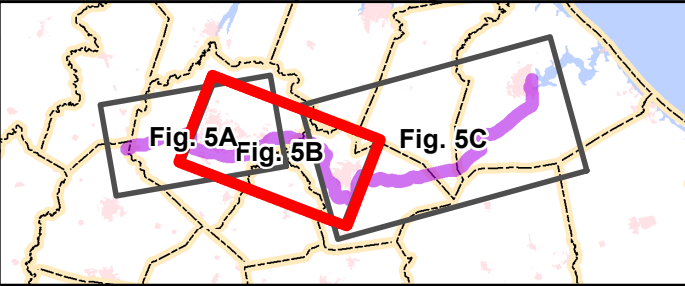
FEBRUARY 2022
Source: NCOneMap, NCDOT GIS, ESRI

Legend

- STC Highway Corridor X
- Interstate
- U.S./N.C. Route
- Rail
- Major Water Bodies
- Municipal Boundary
- Counties

Annual Population Growth (2015-2040)

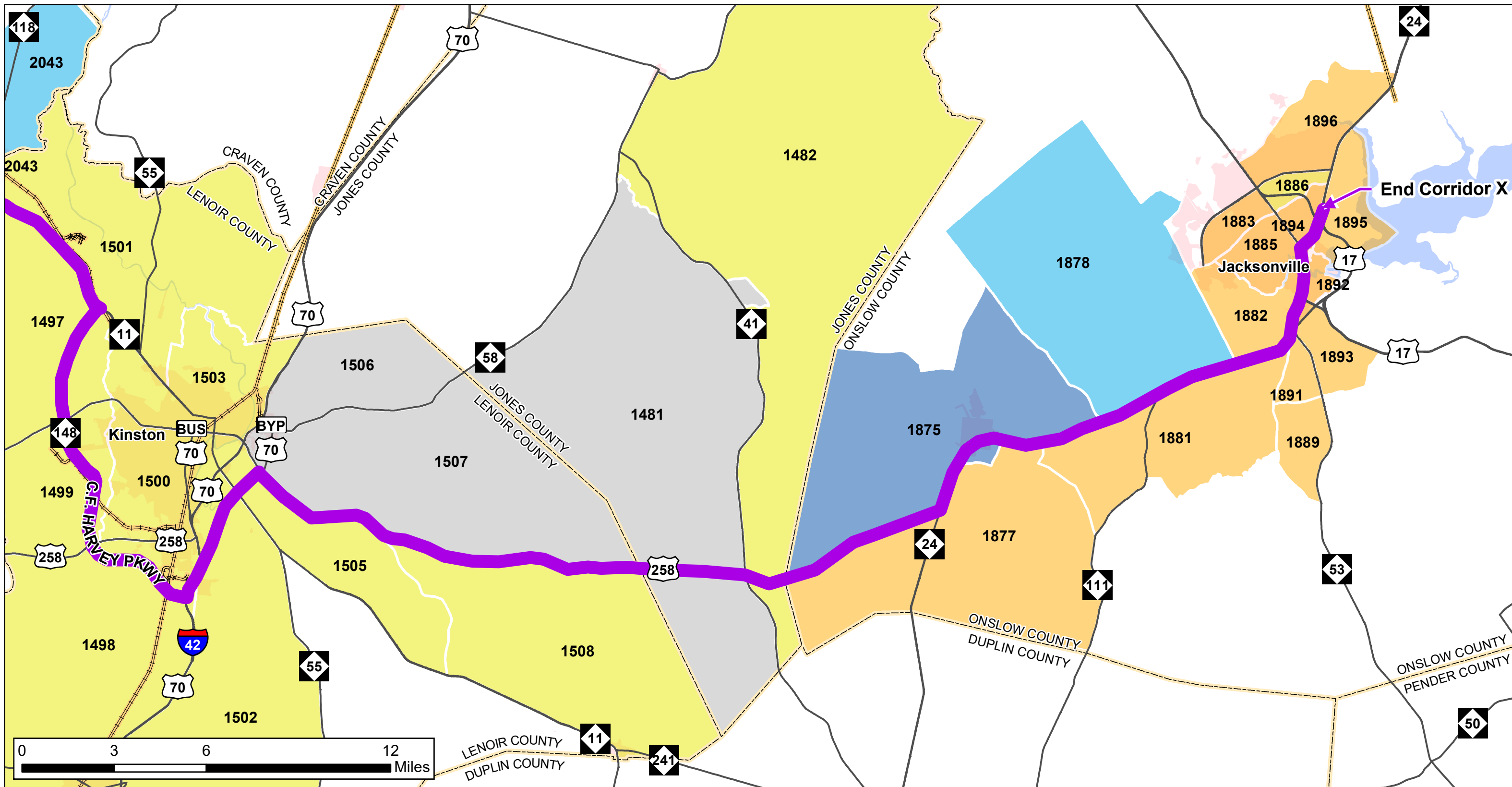
- <0%
- 0.0% - 0.6%
- 0.6% - 1.3%
- 1.3% - 2.0%
- 2.0% - 2.7%



CORRIDOR X: POPULATION GROWTH - STATEWIDE MODEL TRAFFIC ANALYSIS ZONES (TAZ)

FIGURE 5B: GREENVILLE TO KINSTON

TAZ Number on the map correlates to TAZ Number in Appendix F of the Mobility Analysis Report. Additional population and employment data can be found in the data tables.
*TAZ Number is the 1-4 digit solid, bold number in map.



NC STRATEGIC TRANSPORTATION CORRIDOR X (STC)

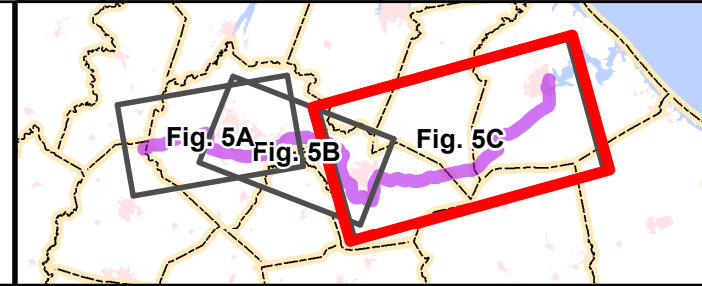
FEBRUARY 2022
 Source: NCOneMap, NCDOT GIS, ESRI

Legend

- █ STC Highway Corridor X
- █ Major Water Bodies
- █ Interstate
- █ Municipal Boundary
- █ U.S./N.C. Route
- Counties
- █ Rail

Annual Population Growth (2015-2040)

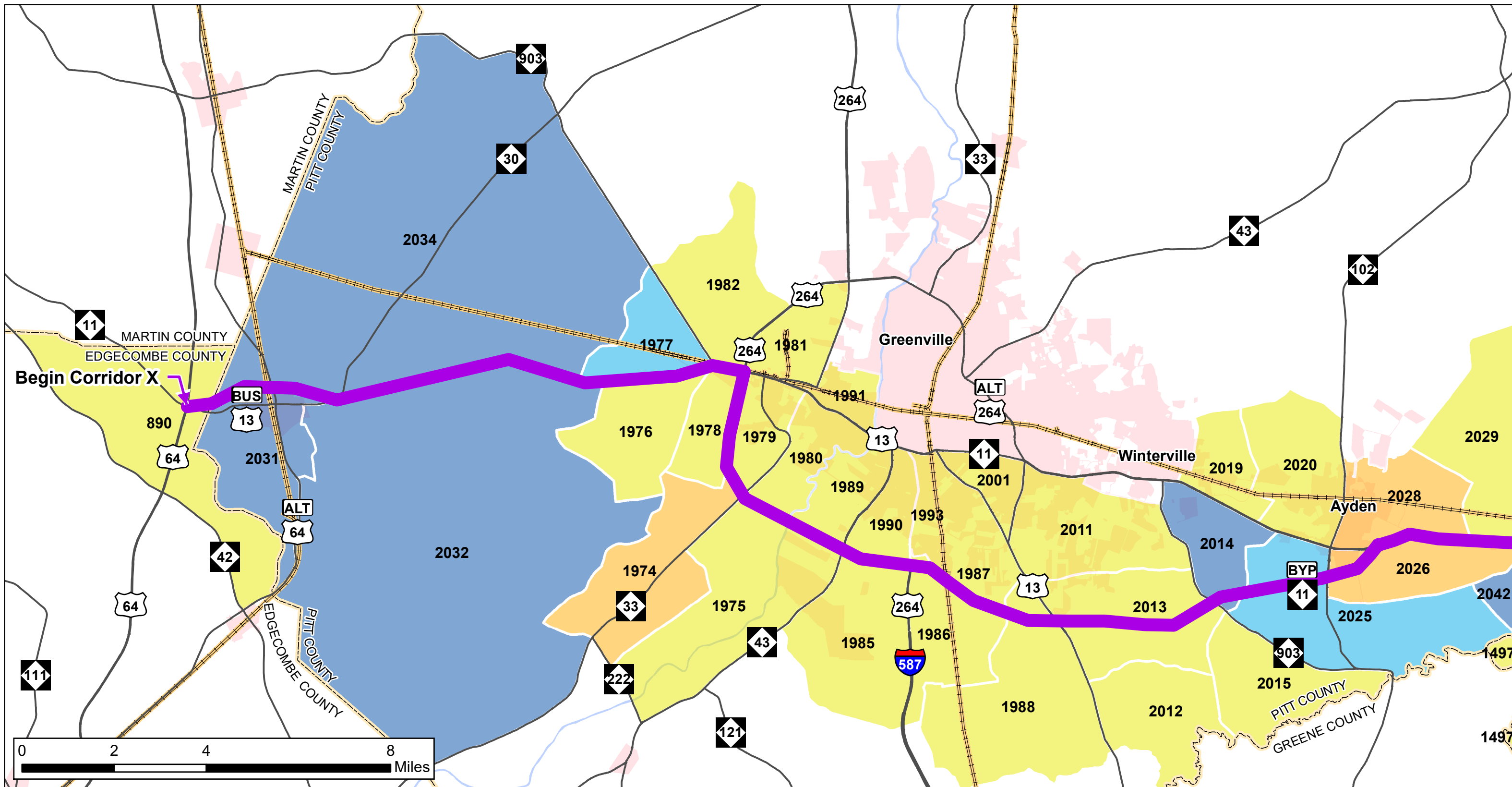
- <0%
- 0.0% - 0.6%
- 0.6% - 1.3%
- 1.3% - 2.0%
- 2.0% - 2.7%



CORRIDOR X: POPULATION GROWTH - STATEWIDE MODEL TRAFFIC ANALYSIS ZONES (TAZ)

FIGURE 5C: KINSTON TO JACKSONVILLE

TAZ Number on the map correlates to TAZ Number in Appendix F of the Mobility Analysis Report. Additional population and employment data can be found in the data tables.
 *TAZ Number is the 1-4 digit solid, bold number in map.



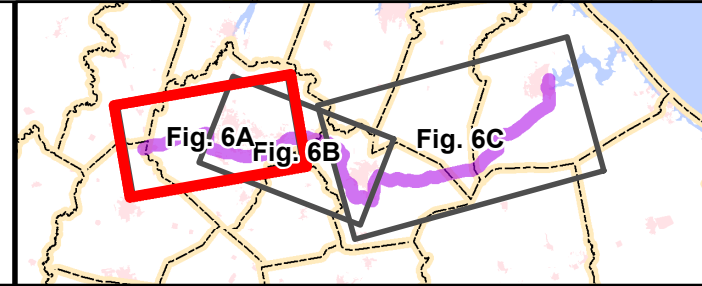
NC STRATEGIC TRANSPORTATION CORRIDOR X (STC)
 FEBRUARY 2022
 Source: NCOneMap, NCDOT GIS, ESRI

Legend

- STC Highway Corridor X
- Interstate
- U.S./N.C. Route
- Rail
- Major Water Bodies
- Municipal Boundary
- Counties

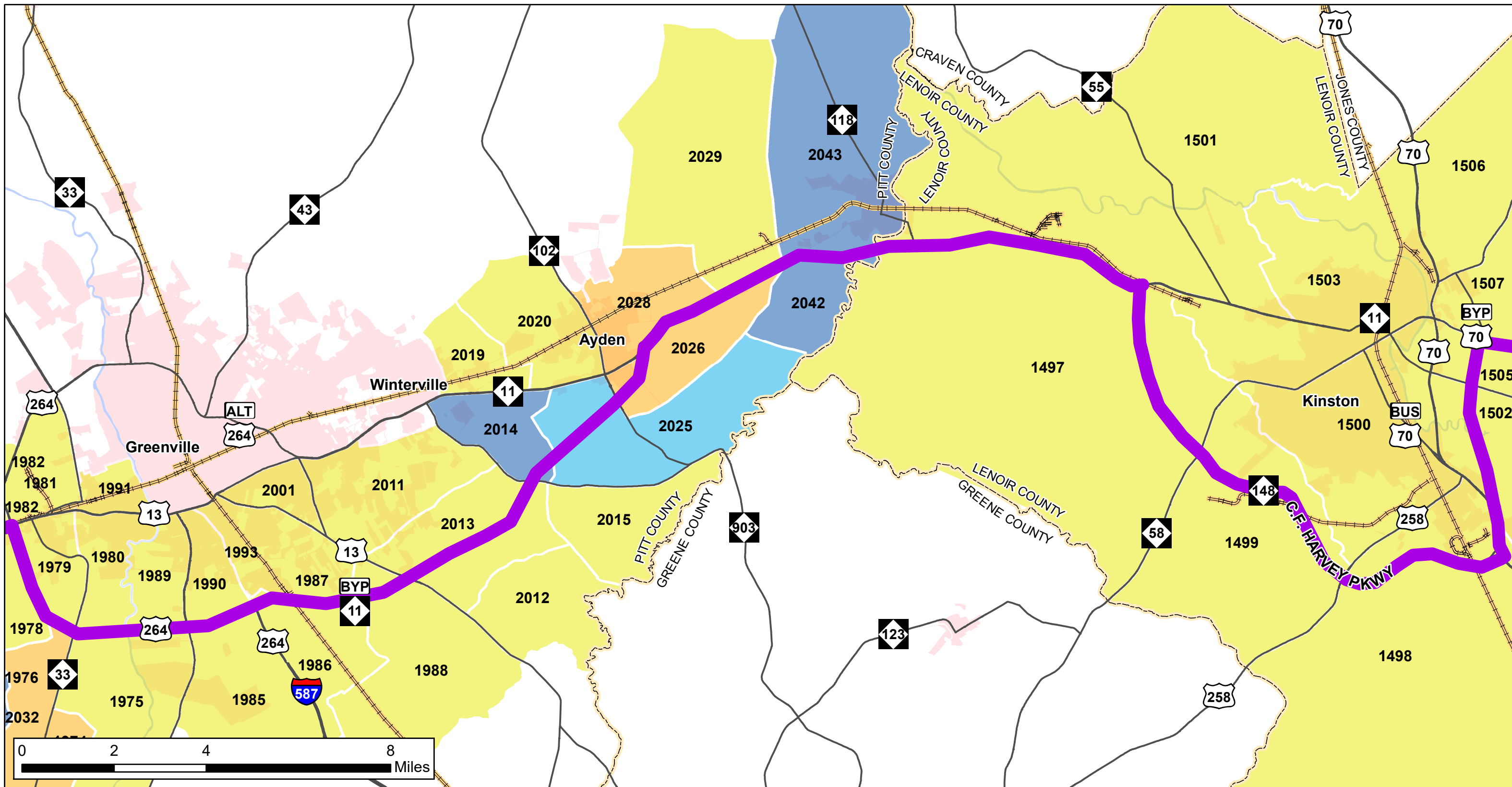
Annual Employment Growth (2015-2040)

- 0.0% - 1.82%
- 1.82% - 3.65%
- 3.65% - 5.47%
- 5.47% - 7.3%



CORRIDOR X: EMPLOYMENT GROWTH - STATEWIDE MODEL TRAFFIC ANALYSIS ZONES (TAZ)
FIGURE 6A: U.S. 13 TO GREENVILLE

TAZ Number on the map correlates to TAZ Number in Appendix F of the Mobility Analysis Report. Additional population and employment data can be found in the data tables.
 *TAZ Number is the 1-4 digit solid, bold number in map.



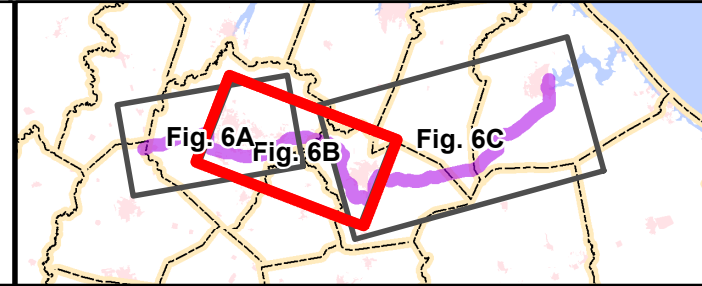
NC STRATEGIC TRANSPORTATION CORRIDOR X (STC)
 FEBRUARY 2022
 Source: NCOneMap, NCDOT GIS, ESRI

Legend

- STC Highway Corridor X
- Interstate
- U.S./N.C. Route
- Rail
- Major Water Bodies
- Municipal Boundary
- Counties

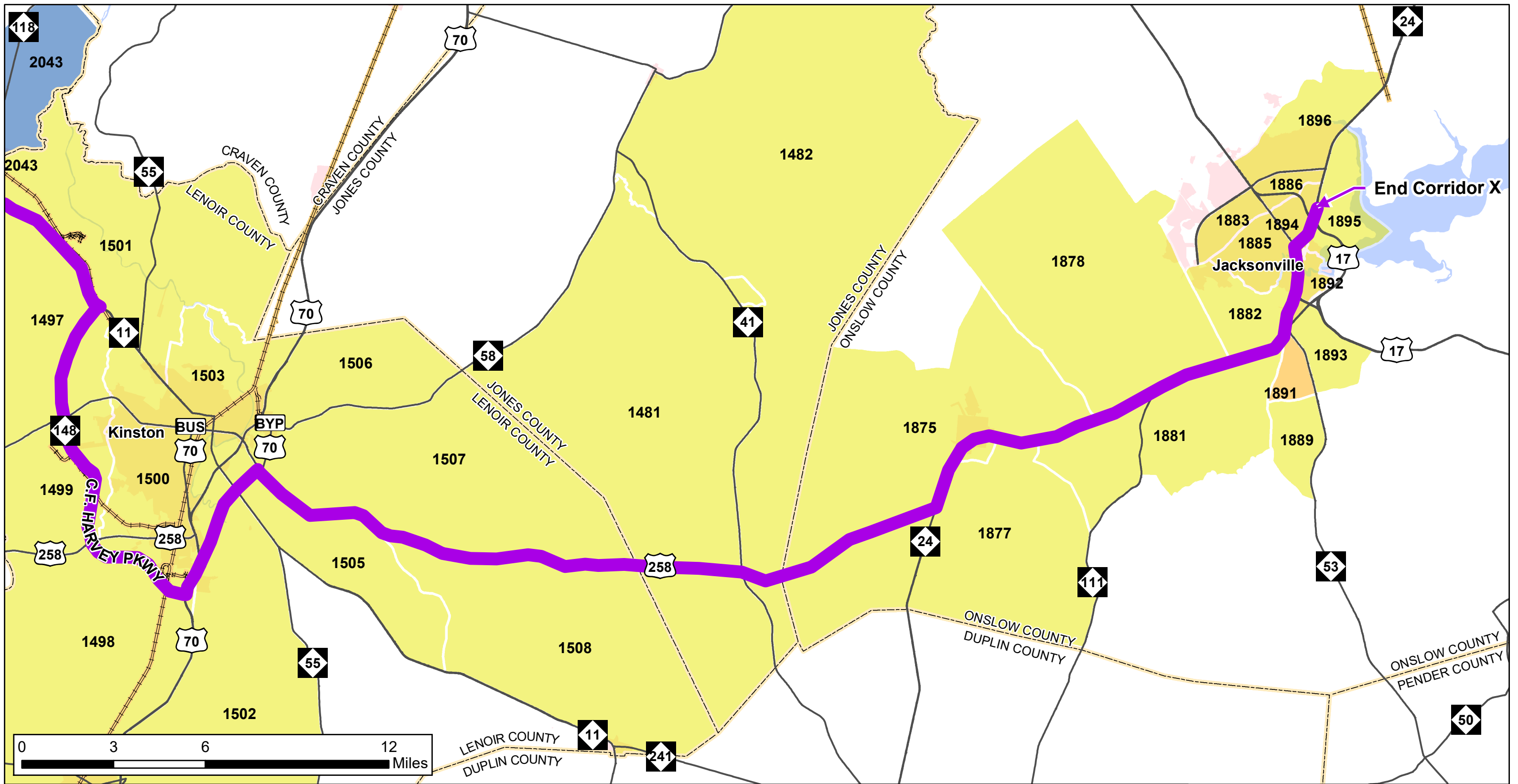
Annual Employment Growth (2015-2040)

- 0.0% - 1.82%
- 1.82% - 3.65%
- 3.65% - 5.47%
- 5.47% - 7.3%



CORRIDOR X: EMPLOYMENT GROWTH - STATEWIDE MODEL TRAFFIC ANALYSIS ZONES (TAZ)
FIGURE 6B: GREENVILLE TO KINSTON

TAZ Number on the map correlates to TAZ Number in Appendix F of the Mobility Analysis Report. Additional population and employment data can be found in the data tables.
 *TAZ Number is the 1-4 digit solid, bold number in map.



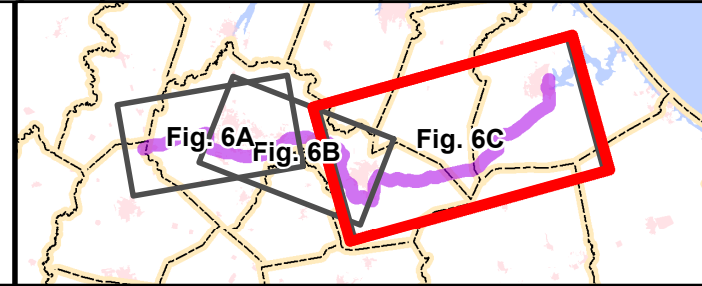
NC STRATEGIC TRANSPORTATION CORRIDOR X (STC)
 FEBRUARY 2022
 Source: NCOneMap, NCDOT GIS, ESRI

Legend

- STC Highway Corridor X
- Interstate
- U.S./N.C. Route
- Rail
- Major Water Bodies
- Municipal Boundary
- Counties

Annual Employment Growth (2015-2040)

- 0.0% - 1.82%
- 1.82% - 3.65%
- 5.47% - 7.3%



CORRIDOR X: EMPLOYMENT GROWTH - STATEWIDE MODEL TRAFFIC ANALYSIS ZONES (TAZ)
FIGURE 6C: KINSTON TO JACKSONVILLE

TAZ Number on the map correlates to TAZ Number in Appendix F of the Mobility Analysis Report. Additional population and employment data can be found in the data tables.
 *TAZ Number is the 1-4 digit solid, bold number in map.